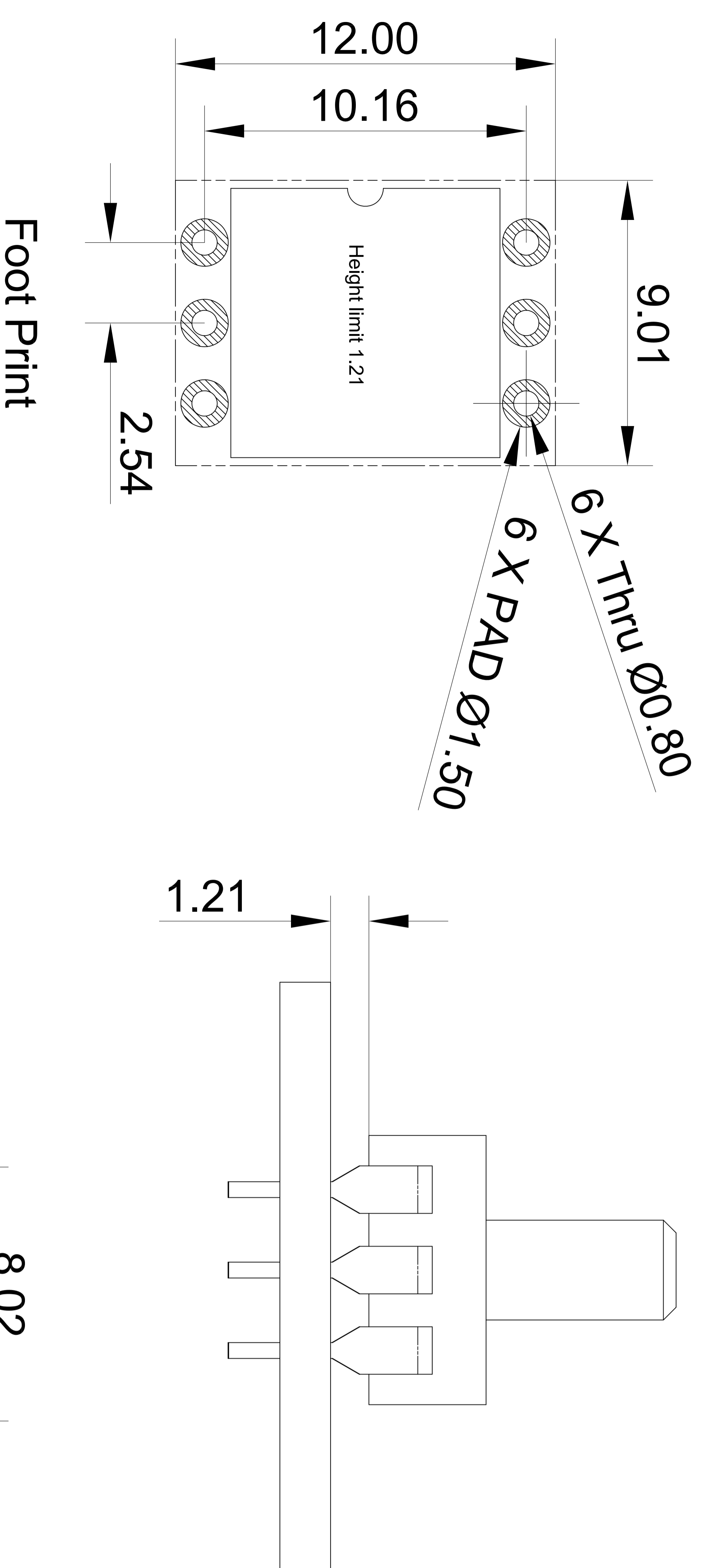
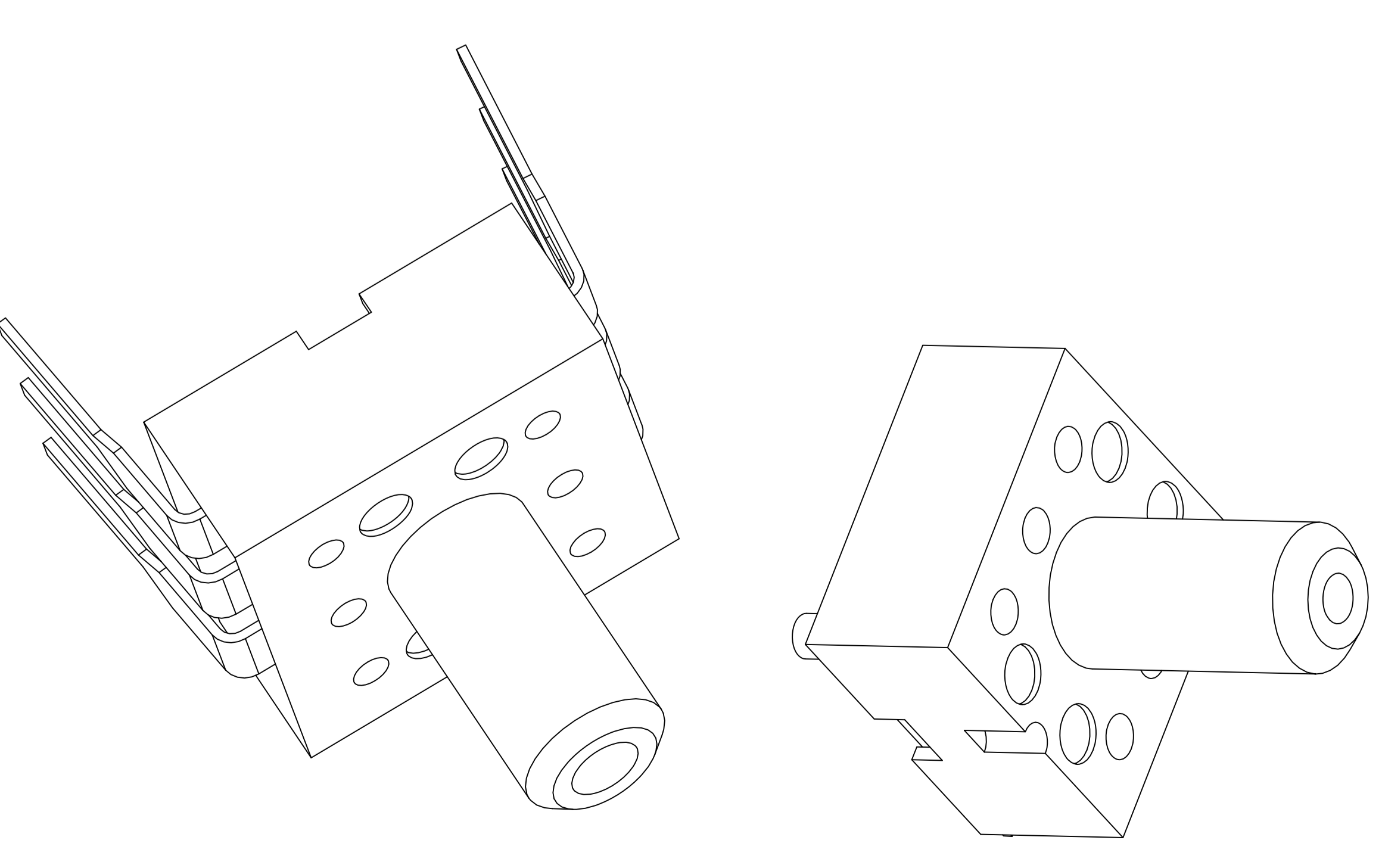


### Compatible PCB recommendation



#### LABLE CONTENTS:

Model : SA25-G-002-D  
 lot no : 120909001000001  
 serial no : 000100000001



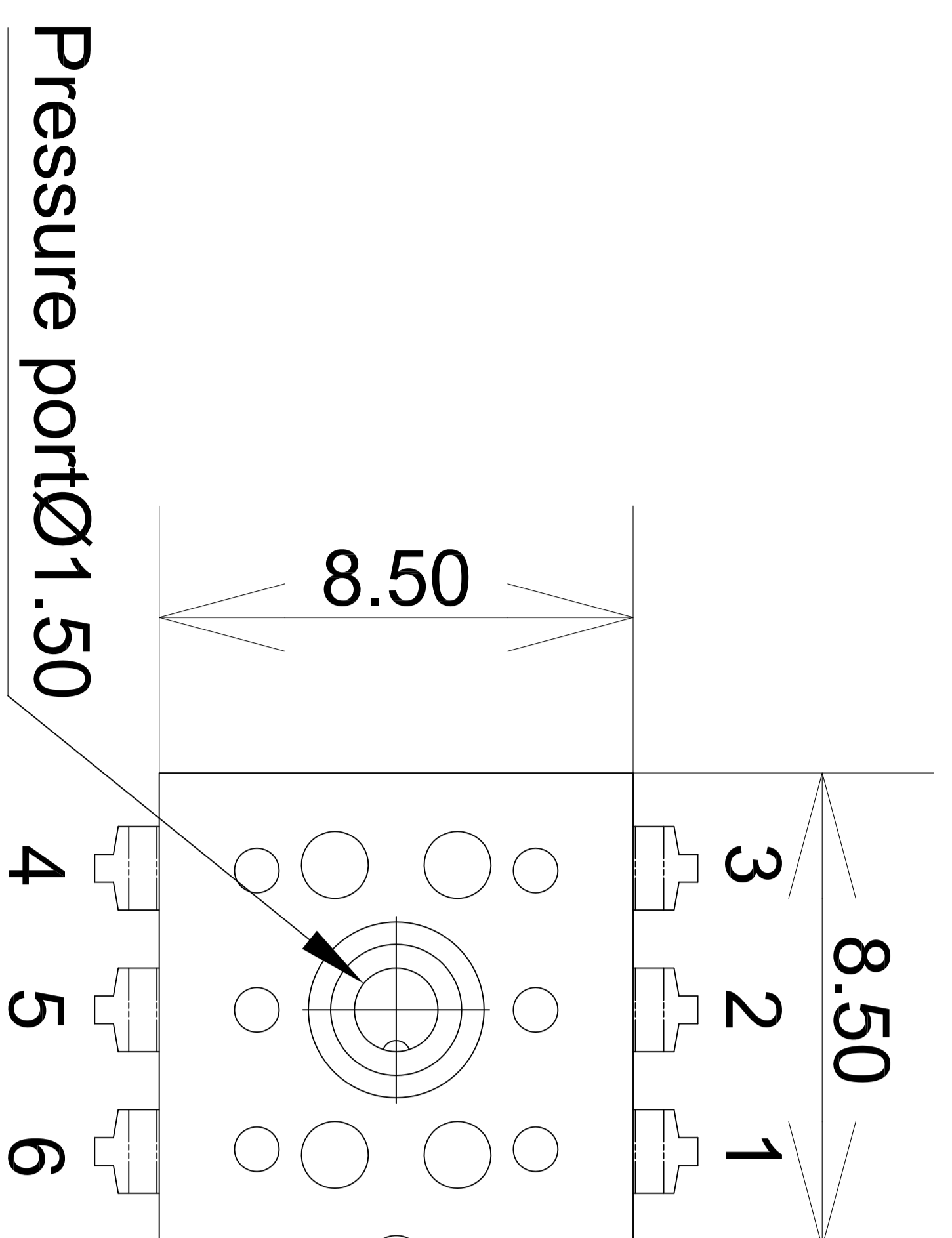
### ORDERING INFO

SA25\*\_\*\*\_\*

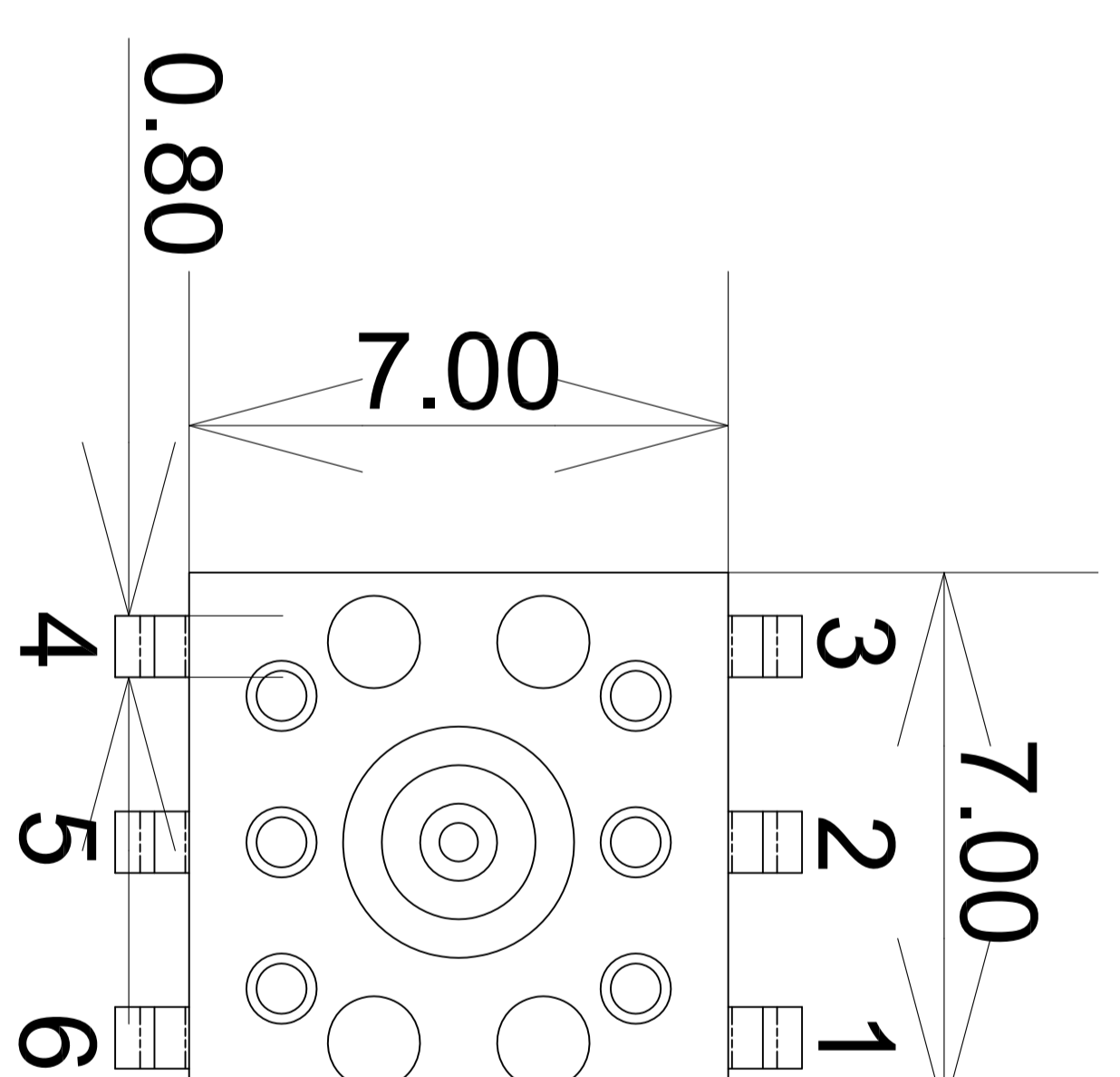
PACKAGING :  
 D-DIP 7.0X7.0MM  
 S-SOIC 8.5X8.5MM

PRESSURE REFERENCE PRESSURE RANGE :  
 A-Absolute 002-(2 PSI, gage only)  
 G-Gage 005-(5.8 PSI, gage only)  
 015-(15 PSI)  
 030-(30 PSI)  
 050-(50 PSI)  
 100-(100 PSI)

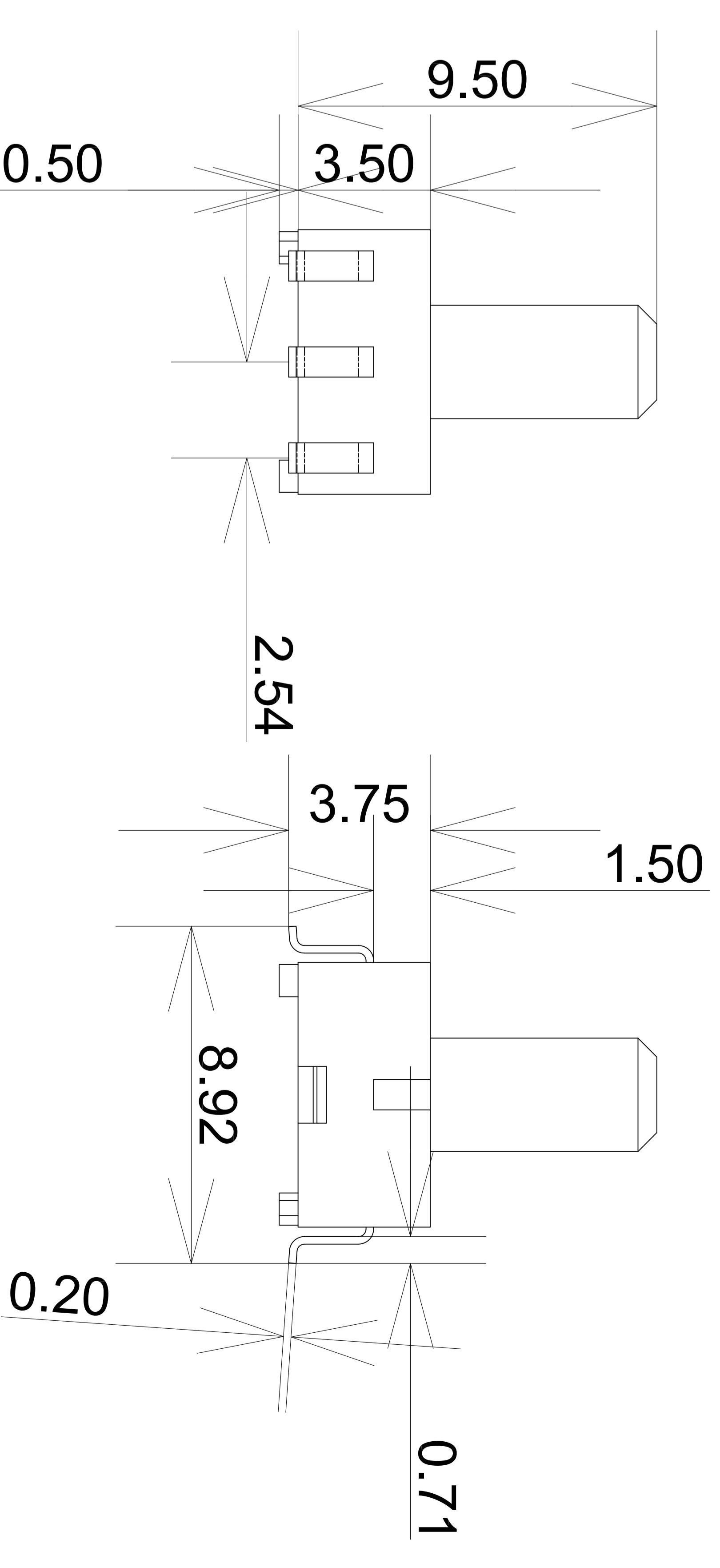
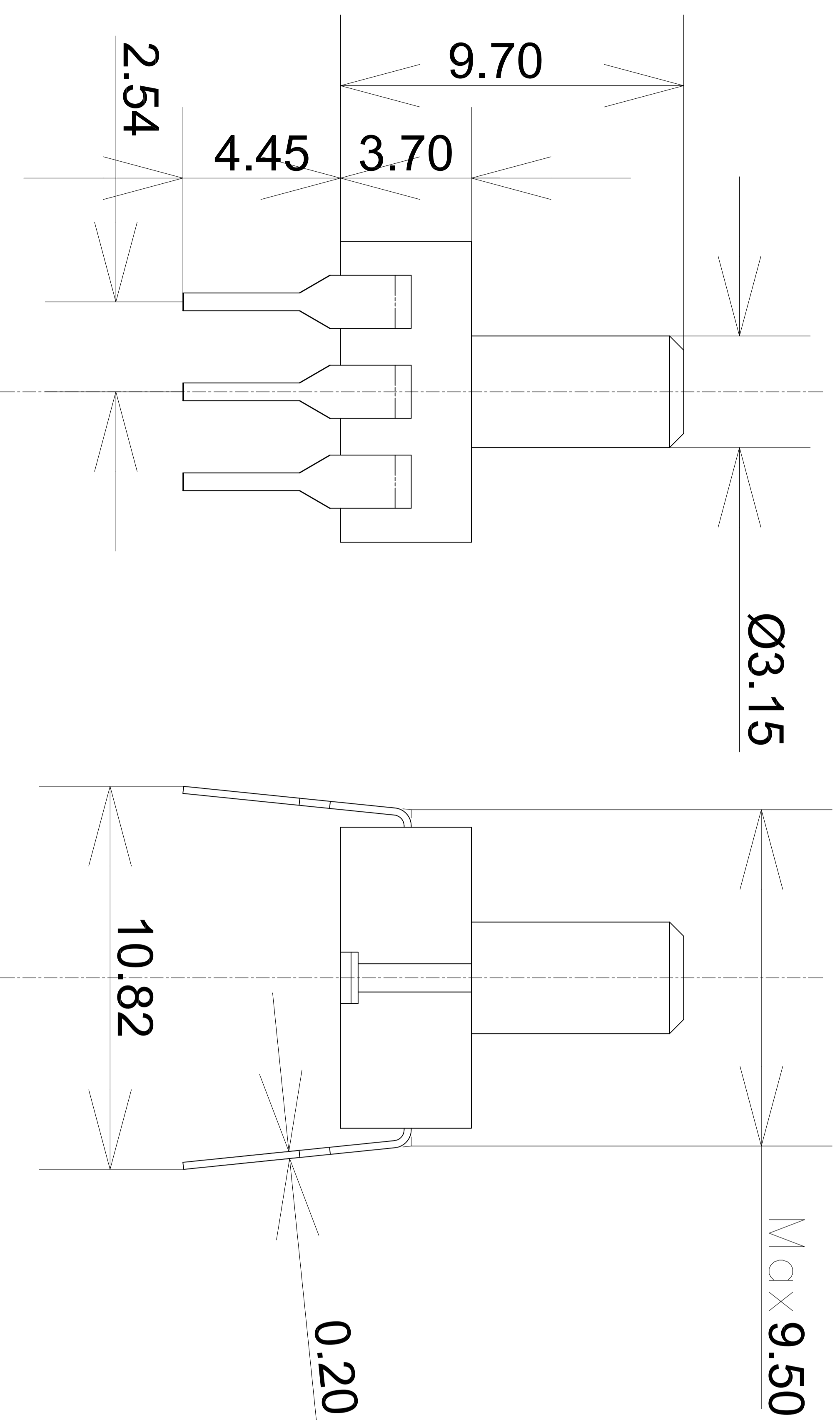
CONFIDENTIAL: THIS DRAWING AND THE INFORMATION CONTAINED HEREIN IS THE PROPERTY OF SENSORALL INTERNATIONAL, AND SHALL NOT BE USED, REPRODUCED, PUBLISHED, OR DISCLOSED TO OTHERS WITHOUT THE EXPRESS WRITTEN CONSENT OF SENSORALL INTERNATIONAL. ALL DATA SUBJECT TO CHANGE. CONSULT FACTORY FOR DETAILS.



Terminal Table	
1-Power+	4-Power-
2-Output+	5-Output-
3-Power-	6-N/A



Terminal Table	
1-Power+	4-Power-
2-Output+	5-Output-
3-Power-	6-N/A



- NOTES :**
- 1 , Reference conditions (unless otherwise noted) :  
 Supply voltage  $V_s=5.0V_{dc}$   $T_a=25^{\circ}C$  [77°F];  
 Output signal is ratiometric to the supply voltage.
  - 2 , Temperature Coefficients are typical values between  $-20^{\circ}C$  and  $+100^{\circ}C$
  - 3 , Span is the algebraic difference between the outputs at full pressure and zero pressure.  
 Span is ratiometric to the power supply.
  - 4 , Response time for  $0psi$  to full scale pressure step change, 10 to 90% rise time.

CONFIDENTIAL: THIS DRAWING AND THE INFORMATION CONTAINED HEREIN IS THE PROPERTY OF SENSORALL INTERNATIONAL, AND SHALL NOT BE USED, REPRODUCED, PUBLISHED, OR DISCLOSED TO OTHERS WITHOUT THE EXPRESS WRITTEN CONSENT OF SENSORALL INTERNATIONAL. ALL DATA SUBJECT TO CHANGE. CONSULT FACTORY FOR DETAILS.

PART NUMBERS	PRESSURE RANGE	LINEARITY % SPAN	HYSTERESIS % SPAN	OFFSET (mV)	SPAN (mV)	OVER-PRESSURE (PSI MAX)	RESPONSE TIME (mSEC) MAX	TEMPERATURE OF OFFSET (% SPAN / °C)	TEMPERATURE COEFFICIENT OF SPAN (% SPAN / °C)
<b>SA25G-002-*</b>	<b>2 PSI</b>	±0.3	±0.1	±25	40 ±20	15	0.5	+0.07	-0.19
SA25G-005-*	5.8 PSI (300mmHg)	±0.3	±0.1	±25	110 ±40	15	0.5	+0.07	-0.19
SA25G-015-*	15 PSI	±0.3	±0.1	±50	75 ±30	45	0.5	+0.02	-0.19
SA25G-030-*	30 PSI	±0.3	±0.1	±50	80 ±30	90	0.5	+0.02	-0.19
SA25G-050-*	50 PSI	±0.3	±0.1	±50	70 ±25	150	0.5	+0.02	-0.19
SA25G-100-*	100 PSI	±0.3	±0.1	±50	70 ±25	300	0.5	+0.02	-0.19
SA25A-015-*	15 PSI Abs	±0.3	±0.1	±50	75 ±25	45	0.5	+0.02	-0.19
SA25A-030-*	30 PSI Abs	±0.3	±0.1	±50	80 ±30	90	0.5	+0.02	-0.19
SA25A-050-*	50 PSI Abs	±0.3	±0.1	±50	70 ±25	150	0.5	+0.02	-0.19
SA25A-100-*	100 PSI Abs	±0.3	±0.1	±50	70 ±25	300	0.5	+0.02	-0.19

ENVIRONMENTAL SPECIFICATIONS

OPERATING	-40°C to 125°C [-40°F to 257°F]
STORAGE	-40°C to 125°C [-40°F to 257°F]
VIBRATION	10g at 20Hz to 2000Hz
WEIGHT	<1 Gram
LIFE	1 Million cycles minimum
LEAD SOLDER TEMPERATURE (DIP PACKAGE)	Dip in solder bath-Max 250°C (482°F) for 5 seconds
SMT SOLDER (SOIC PACKAGE)	Sn 96.5 Ag 3.5 No clean flux Sn63 Pb37 No clean flux
SMT REFLOW PROFILE (SOIC PACKAGE)	Max peak temperature of 250°C (482°F) for 10 seconds

GENERAL SPECIFICATIONS

	MIN	TYP	MAX	UNITS	REMARK
EXCITATION	2.0	5.0	10.0	Vdc	
i/p & o/p IMPEDANCE	2.8K	3.3K	3.8K	Ohms	for 2 & 5psi range
i/p & o/p IMPEDANCE	3.2K	4.0K	4.8K	Ohms	for 15psi & above

CONFIDENTIAL: THIS DRAWING AND THE INFORMATION CONTAINED HEREIN IS THE PROPERTY OF SENSORALL INTERNATIONAL, AND SHALL NOT BE USED, REPRODUCED, PUBLISHED, OR DISCLOSED TO OTHERS WITHOUT THE EXPRESS WRITTEN CONSENT OF SENSORALL INTERNATIONAL. ALL DATA SUBJECT TO CHANGE. CONSULT FACTORY FOR DETAILS.